



St Mary's Catholic Primary School

Term 3 Week 4

February 1st 2019

Cold hands and feet did not stop children (and staff) having fun in the snow today. In the snow play we were able to see very clear evidence of some of our St Mary's learning values too: Collaboration, Independence and Resilience.



Dates for Your Diary

Remember: PI shows parents, carers, parishioners and friends are invited to attend.

February

5th Change of Menu today-
Chinese New Year
7th Mass for the
Presentation of Our Lord
PI—rearranged from 1st Feb
7th Maths Club starts KS2
11th-15th Using Tools Week
15th Last day of Term 3
(3.15pm finish)
25th First day of Term 4
27th Dance Club starts again

March

1st Year 6 trip to Imperial
War Museum.
1st Year 2 Cake Sale PI
6th Ash Wednesday Liturgy
6th Year 3 Kent Life Trip
11th-15th Arts Events Week
15th Lent reconciliation
Service PI
18th—22nd Learning
Consultation Week. PI
29th FSM Mother's Day
Sale

29th Year 4 Cake sale PI

April

4th Stations of the Cross
Service PI
5th FSM Easter Egg Hunt PI
5th Last day of Term 4 -
School finishes at 1pm

Attendance

Red Class YR: 93.3%
Orange Class Y1: 99.3%
Yellow Class Y2: 92.3%
Green Class Y3: 90.0%
Blue Class Y4: 98.2%
Indigo Class Y5: 94.5%
Violet Class Y6: 98.0%



Well Done
Orange
Class

***** Snow Days *****

In the event of inclement weather I have to make a decision very early in the morning as to whether the school will be open. This decision is made after consultation with other local headteachers and in consideration of the particular needs of our school site.

We will always try to keep the school open if it is safe to do so. Today we decided to open at the later time of 10am. This was to ensure that staff (some of whom live up to 30 miles away) were able to get in to school safely and that we had enough staff in to look after children. If we announce that we will open later it is possible that we will not have teachers on site at the usual opening time and therefore children must not be dropped off earlier than the stated time.

When school has opened on snowy days, local headteachers and myself have agreed that children within walking distance or on roads that we know to be clear who do not come to school will have absences marked as unauthorised.

Finally, please ensure that you are receiving school texts and emails and checking the school Facebook page so that you are aware of the decision the school has made. Thank you for your support. I am happy to announce that we had an attendance rate of 91% today!

Taken from this week's Gospel

4th Sunday in Ordinary Time Year C

Luke 4:21-30

Jesus is rejected in his hometown of Nazareth.



~ Pray ~ Learn ~ Love ~ Enjoy ~



Next week 5th February the children in Years 2 & 4 will be making Chinese lanterns. We would like donations of empty plastic bottles to be brought in on Monday. (no milk ones please). Thank you.

Using Tools Week 11th to 15th February

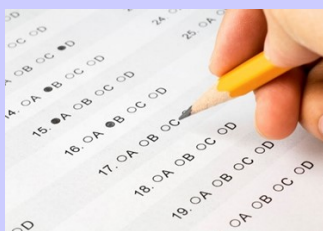
Further to the details in last week's newsletter a reminder that we are inviting people who work regularly with tools to bring their tools and visit a class in school. We are also looking for donations of unwanted tools (non electrical) *Please let your child's class teacher know if you can help!*

News from Violet Class

Mock SATS Week

This week in Year 6, we have been working on some test papers for our mock SATS week. This is a time when we prepare ourselves for the upcoming SATS paper. We used last year's SATS papers to show us what SATS will be like. We are marking our own papers to understand what we need to work on. By marking our own papers in our lessons and at home, we can practise the areas we might struggle with.

By Sophie Baker and Ariadne Easton



Please note the change of menu for Tuesday 5th February to celebrate Chinese New Year.

Do you have some spare time to listen to children read in school time? We are looking for some additional helpers. These can be parents or grandparents who are willing to help out regularly or occasionally. You will need to complete a DBS (formerly CRB) safeguarding checks. Please contact the office for more details. Thank you.



There has been report of Headlice in school, please check your children's hair regularly and treat accordingly.

News from the Friends of St Mary's School

Upcoming events

29th March—Mothers Day Sale, Further details to follow.



facebook

The friends have a new Facebook page which will keep you up to date with events and news. If you are a user of Facebook, please search for [FriendsofStMarysCrow](#) and click [Like](#) to follow. This is a closed group for members only and is not open to the public.



DOUBLE DONATIONS UNTIL SUNDAY Some retailers are doubling their donations until Sunday 3rd February. If you shop online, please could you sign up to easyfundraising to support Friends of St Mary's School - Crowborough? It's a really easy way to raise money for us – you just use the easyfundraising site to shop online with more than 3,300 well known online stores like Amazon, Argos, John Lewis, ASOS, Booking.com, eBay, Boden, and M&S and when you make a purchase, the retailer sends us a free donation, at no extra cost to you. We want to raise as much as possible, so please visit our easyfundraising page at <https://www.easyfundraising.org.uk/causes/stmaryscrowborough/> and click 'support us'. Thank you!

